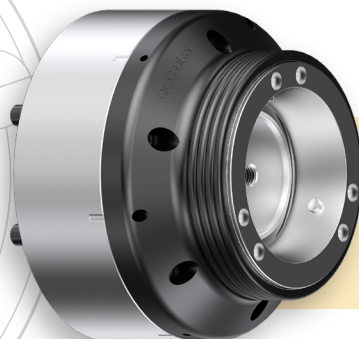


# QUICK CHANGE FLEX COLLET CHUCKS

## Workholding Solutions for Turning Centers



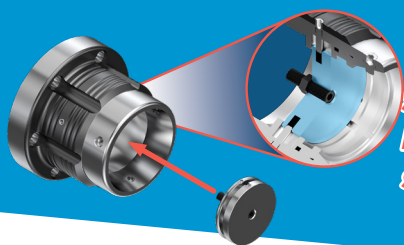
**Optimized for Maximum Rigidity: Rough and finish as you would in a 3-jaw chuck!**



**Modular Design: 2-piece design allows for modular flexibility of the collet chuck**

### PULL-BACK-STOP CHUCKS

- This Pull Back-Stop Chuck offers typical axial collet movement.
- Flexibility of backstop or through-material applications.
- 1-piece body design provides easy installation with maximum accuracy and rigidity.



**Stationary removable backstop included as standard.**

### DEAD LENGTH MODULAR CHUCKS

- This Dead Length Modular Chuck offers fixed axial collet location.
- Modular design allows for variable machine taper mounts within the same series.
- Taper-to-Taper design provides easy installation with maximum accuracy.
- Stationary removable backstop included as standard.



A2-5 Base A2-6 Base A2-8 Base 140mm Flat Back 170mm Flat Back

### DESIGN & CONSTRUCTION

- Wear Resistant Hardened Chromium Steel
- Small Nose Diameter for Increased Tool Clearance

### SET-UP

- Quick & Easy Installation: Switch from a 3-jaw chuck to a Collet Chuck in under 10 minutes
- Fast Collet Changes: swap collets in 10 seconds

### PERFORMANCE

- Maximum Gripping Range (0.062"): Accommodates oversized/undersized material
- High RPM for Production Flexibility

# QUICK CHANGE FLEX COLLETS

## 42 SERIES - 65 SERIES - 80 SERIES

- **Quick set-up time:** Collet can be switched to any size within seconds, not minutes.
- **Increased Precision:** Collet accuracy is 0.0004" or better.
- **Increased Grip Force:** Collet collapses parallel to work piece, not angular.
- **Increased Clamping Range:** Quick Change Flex collets allow work pieces to be up to +/- 0.0156" from nominal diameter.



## SMOOTH COLLETS

- Heat Treated to 60 HRC.
- Wear Resistant Alloy Carbon Steel.
- Ground Cam Relief allows for precision repeatability and accuracy of .0004" or better.
- Collets are precision paired before rubber vulcanization process to optimize roundness and cylindrical accuracy.
- Lyndex-Nikken bores are longer than the competition, providing greater gripping force.



## SERRATED COLLETS

- Hardened serrations provide strong gripping strength for aggressive roughing of material.
- Ideal for bar feeding applications.
- Collets are precision paired before rubber vulcanization process to optimize roundness and cylindrical accuracy.
- Serration lengths inside the bore are longer than the competition, providing much stronger gripping force.



## HEX COLLETS

- Heat Treated Alloy Structural Steel.
- Ground Cam Relief allows for precision repeatability and accuracy of .0004" or better.
- Collets are precision paired before rubber vulcanization process to optimize roundness and cylindrical accuracy.
- Lyndex-Nikken bores are longer than the competition, providing greater gripping force.

## SEE IT IN ACTION!



**Scan to view our Quick Change Flex Collets video and let us show you the maximum efficiency achievable through this system. Not convinced? Contact us for a live demo!**



847.367.4800 | sales@lydextrnikken.com  
**lydextrnikken.com**



Connect With Us: [f](#) [in](#) [ig](#) [X](#) [yt](#)

Features and dimensions are subject to change without prior notice. For additional information, please contact us or see our complete QCFC Catalog.